

I-80/SR 65 Interchange Improvements Project



Alternatives Screening & Identification Process

Overview

After evaluating more than 20 concepts, the project team has identified the following 7 potential concepts for further focused evaluation. These 7 concepts are based upon the Caltrans' Alternative 3 (Initial Concept) contained in the Project Study Report (PSR) and make incremental improvements from the Initial Concept to improve operations of the overall system.

Existing Conditions

The targeted areas for improvement include:

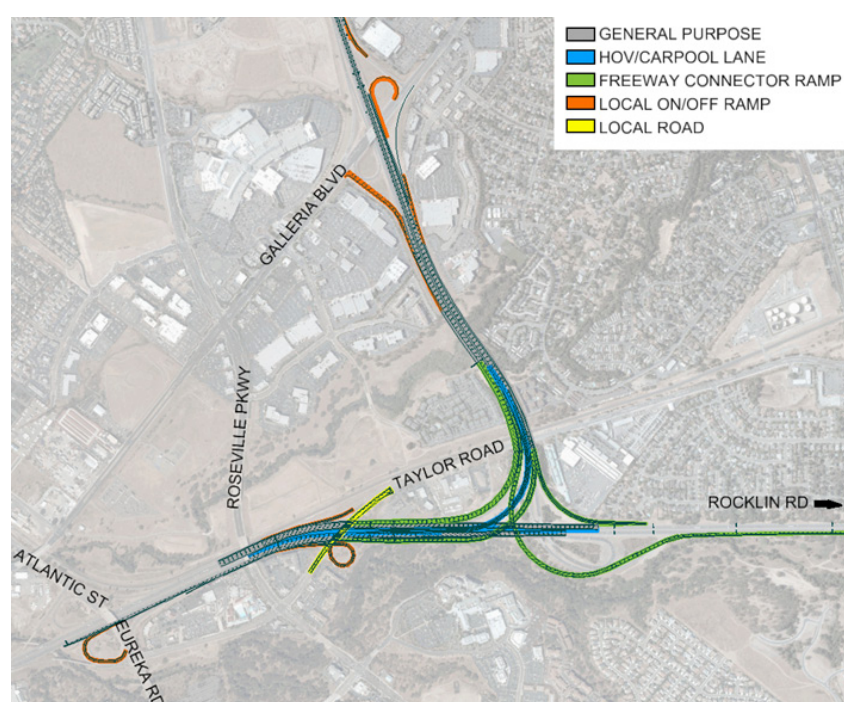
- Freeway weaving section westbound on I-80
- Freeway weaving section eastbound on I-80 between Eureka Road to SR-65
- Ramp merge southbound on SR-65 to westbound on I-80
- Ramp merge westbound on I-80 to northbound on SR-65
- Adjacent site conditions
- FHWA and Caltrans processes and requirements

Project Goals

- Reduce congestion
- Improve traffic operations within the project and enhance safety
- Maintain community access
- Consider all travel modes and users

Potential Concepts

- Provide additional highway capacity and improved weaving conditions on I-80 and SR-65
- Add capacity to I-80/SR-65 interchange
- Provide an I-80/SR-65 HOV/Carpool direct connection
- Improve local and regional circulation and access at Taylor Road, Eureka Road and Galleria Boulevard



Caltrans PSR Alternative 3

REVISED SCHEDULE 2012 Project Schedule

TASK	Jan	Feb	Mar	Apr	May	June	July	Aug	Sept	Oct	Nov	Dec
Traffic Counts	Jan/Feb 2012											
Traffic Operational Analysis		February - August 2012										
Environmental Technical Studies					Beginning May 2012							
More Detailed Preliminary Engineering	On-going											
Release of Notice of Preparation & Next Stakeholder/Public Workshop							July 2012					

HIGHLIGHT OF PROJECT CONCEPTS

CONCEPT 1

Initial Concept with Taylor Road Access Shifted

Benefits include:

- Improves interchange spacing
- Improves I-80 weaving
- Maintains local access to Taylor Road

Concerns:

- Taylor Road is a partial interchange (undesirable)
- Limited access to local traffic

CONCEPT 2

Initial Concept with Full Access for Taylor Road with a Diamond Shape Interchange

Benefits:

- Improves interchange spacing
- Improves I-80 weaving
- Provides full I-80 access at Taylor Road

Concerns:

- Requires Caltrans/FHWA approval
- Addresses driver expectation
- Involves combined local-system interchange ramps

CONCEPT 3

Initial Concept with Full Access for Taylor Road with a Trumpet Shape Interchange

Benefits:

- Improves interchange spacing
- Improves I-80 weaving
- Provides full I-80 access at Taylor Road

Concerns:

- Requires Caltrans/FHWA approval
- Addresses driver expectation
- Involves combined local-system interchange ramps

CONCEPT 4

Concept 3 with Antelope Creek Connection

Benefits:

- Adds parallel capacity on local street

Concerns:

- May change local traffic circulation patterns
- May impact local landfill and UPRR properties

CONCEPT 5

Initial Concept with Taylor Road Interchange Eliminated

Benefits:

- Improves interchange spacing
- Improves I-80 weaving
- Minimizes freeway access points

Concerns:

- Shifts traffic volumes to Eureka Road interchange and surrounding interchanges
- Less direct access to businesses on Taylor Road
- Requires a westbound I-80 auxiliary lane to Douglas Blvd.

OTHERS:

CONCEPT 6

Transportation System Management

- Add Southbound SR-65 Connector Ramp Metering
- Add Local Interchange Ramps

CONCEPT 7 – No Build

