



POINTS OF INTEREST

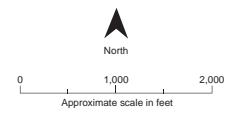
- ① Miners Ravine/Secret Ravine Creek and Multi-use Trail System
- ② UPRR
- ③ Golfland Sunsplash
- ④ Sutter Roseville Medical Center
- ⑤ Business and residential area - "Stone" House, Alta Sierra Body Shop, Cattlemens Restaurant
- ⑥ Business area- Future Fleet Center, Taylor Road Self Storage
- ⑦ Apartment Complexes - The Preserve at Creekside (West), Hearthstone (East)
- ⑧ Antelope Creek and Multi-use Trail System
- ⑨ Commercial Center - Discount Spa/Warehouse Scandanavian Design, Sunset Christian Center
- ⑩ Creekside Town Center - Courtyard by Marriott, Homewood Suites by Hilton, Old Navy
- ⑪ Galleria Mall
- ⑫ Stanford Crossing - Costco, Sports Authority

ONGOING PROJECTS

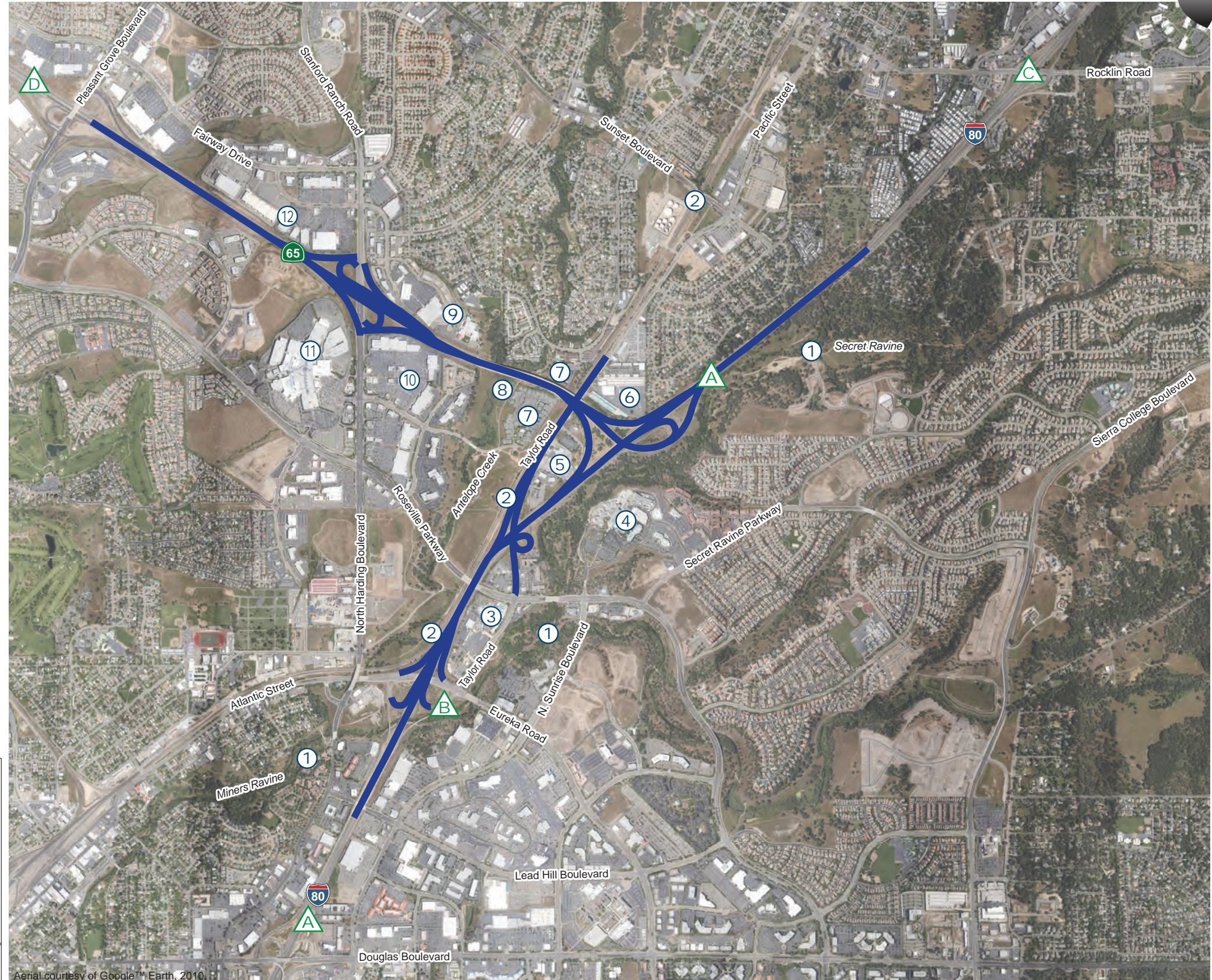
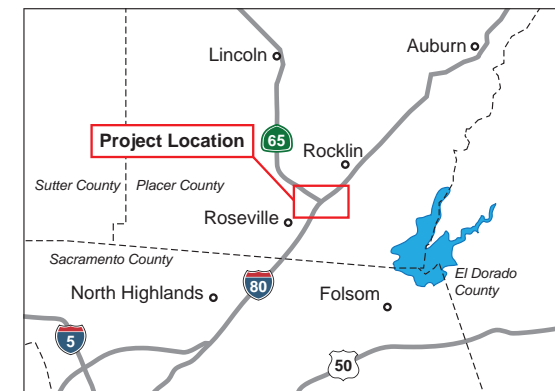
- A** I-80 "Bottleneck" Construction Project, Caltrans
- B** I-80/Eureka Rd IC Construction Project, begin Summer 2011, City of Roseville
- C** I-80/Rocklin Road IC improvement project, PSR/PR begin 2011, City of Rocklin
- D** SR65 Mainline and HOV improvements, Caltrans Project Study Report

KEY

Project Limits



PROJECT VICINITY



Aerial courtesy of Google™ Earth, 2010.

