

I-80/SR 65 Improvements Project

Placer County Transportation Planning Agency (PCTPA)



Planned Interchange Improvements

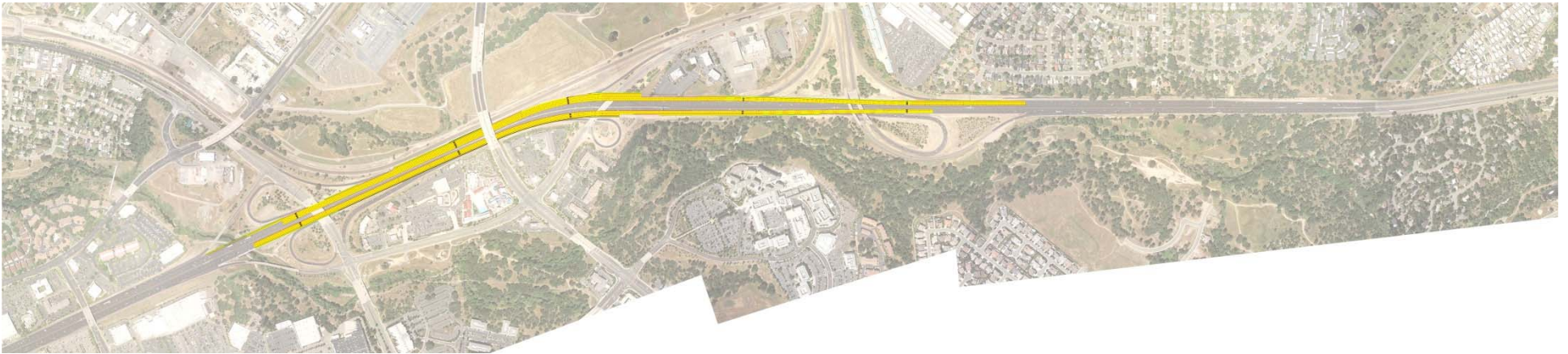


Existing Conditions

Placer County Transportation Planning Agency (PCTPA)



Planned Interchange Improvements



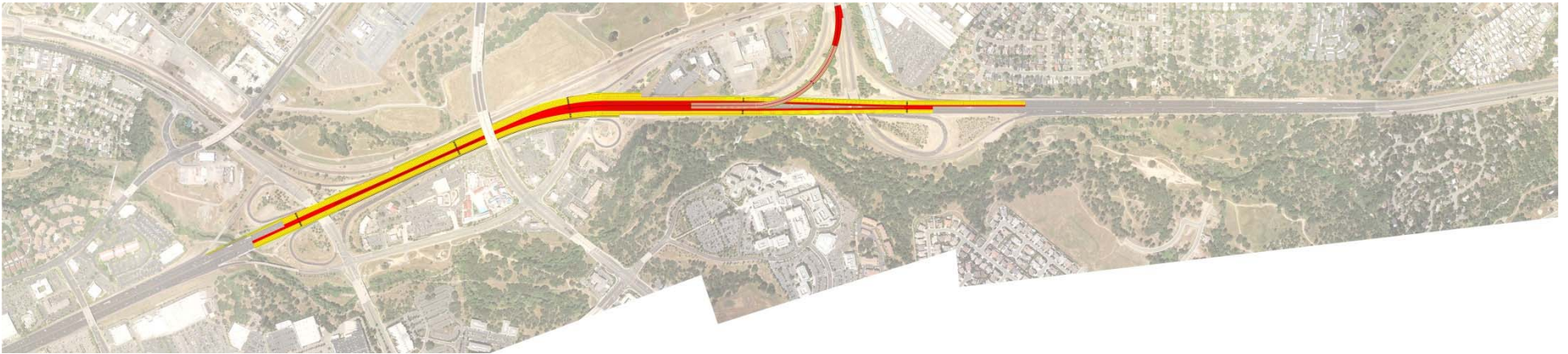
I-80 Widening

Freeway widening in both directions between Eureka Road/Atlantic Street
and the I-80/SR 65 System Interchange

Placer County Transportation Planning Agency (PCTPA)



Planned Interchange Improvements



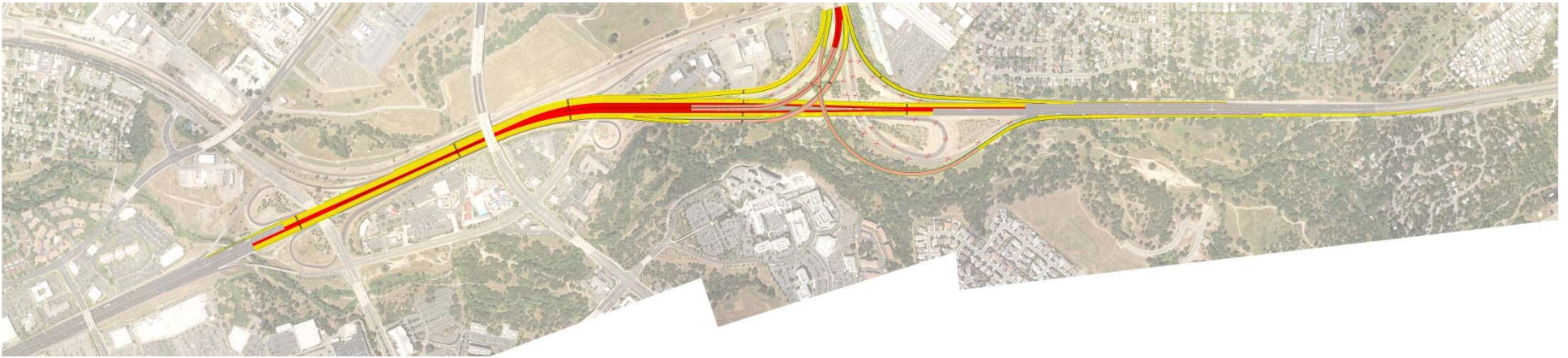
I-80 HOV Improvements

- Add HOV lanes in each direction
- Add HOV ramp connecting I-80 and SR 65

Placer County Transportation Planning Agency (PCTPA)



Planned Interchange Improvements



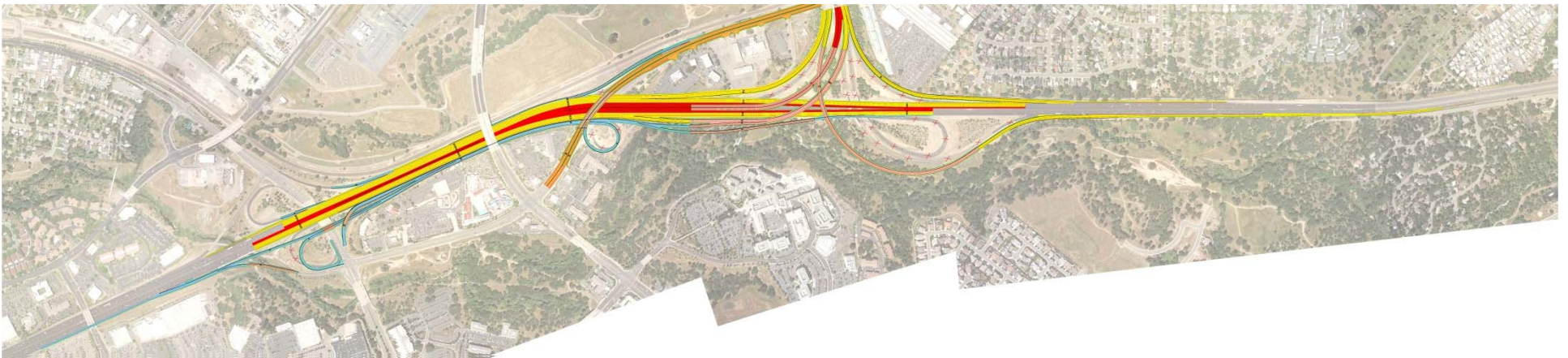
I-80 Connector Ramp Improvements

Remove loop connector and replace flyover structure
Realign and widen each connector ramp

Placer County Transportation Planning Agency (PCTPA)



Planned Interchange Improvements



Local Improvements

- Add eastbound lanes adjacent to I-80
- Maintain existing Taylor Road ramps
- Improve Eureka Road/Atlantic Street Ramps
- Replace Taylor Road Overcrossing
- Improve Taylor Road

Placer County Transportation Planning Agency (PCTPA)

